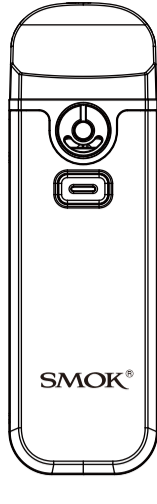


# SMOK®



nord 4 KIT

User Manual

# SMOK

nord 4 KIT

BUY  
SMOK Nord 4 Pod Kit

Smok Replacement Tanks

Smok Replacement Coils

## Introduction

nord 4 is an emblematic pod system kit with versatile capabilities, which can give full play to the performance and advantages of the entire device. It has a built-in 2000mAh battery, enough to provide a maximum power of 80 watts. The kit comes with two 4.5ml nord 4 pods, one with an RPM 2 mesh coil and the other with an RPM mesh coil. Besides, two air-inlet rings are cleverly designed on the top of the device for free adjustment of air intake. We build this legend for you, and you make it yours. Innovation keeps changing the vaping experience.

## The Kit Includes

- 1 x nord 4 Device (2000mAh)
- 1 x nord 4 RPM 2 Pod (RPM 2 Mesh 0.16Ω Coil Preinstalled) (4.5ml)
- 1 x nord 4 RPM Pod (RPM Mesh 0.4Ω Coil Preinstalled) (4.5ml)
- 1 x Type-C Cable
- 1 x User Manual

## Specifications

Product Category: Electronic Cigarette  
Size: 33.7\* 24.4\* 104.9mm  
Weight: 115g  
Output Wattage: 5W-80W  
Battery Capacity: 2000mAh  
Standby Current: < 50uA  
Input Voltage: 3.3V-4.2V  
Output Voltage: 0.5V-4.0V  
Resistance Range: 0.15Ω-2.50Ω  
Charging Voltage: 5V±0.2V  
Charging Current: 1.1A (Max)  
Overcharge Voltage: 4.3V±0.05V  
Overdischarge Voltage: 2.4V±0.05V  
Overcharge Current: 2A±0.6A

## Verification

Note: Please carefully keep the AB verification codes on the package. AB verification codes are required and will be used in product verification and after-sales service.

1. Please download and install IVPS Tour APP.



English / 01

2. Please refer to <https://www.smoktech.com/new-anti-counterfeiting-system>, and then follow the steps described in THE NEW ANTI-COUNTERFEITING SYSTEM to verify your product.

3. Only the verified product can get warranty service.
4. If you have any questions, please contact SMOK via e-mail, phone or our website to get more help.

## Warranty

nord 4 Warranty Period: 6 Months from the Purchase Date. Within the 6 Months, some items may not be eligible for service due to misuse, damage, or other failures caused other than by manufacturer defects or premature failure. Please contact SMOK Authorized Vendor for more information and terms of service. The Warranty Card should be filled out by the vendor as proof of the store warranty. Please carefully keep the anti-counterfeiting label with the product packaging if you need a factory warranty. For more warranty policies and processes, please visit our official website: <http://www.smoktech.com/support/>.

## SMOK Hearty Service

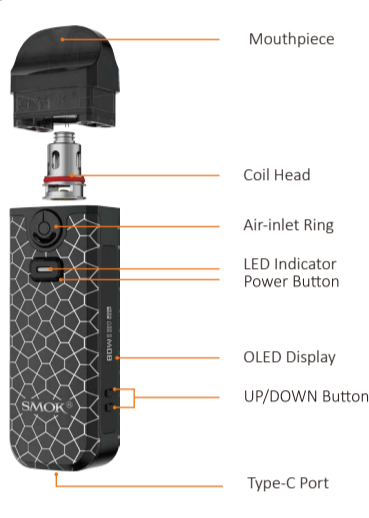
If you need after-sales service, please send e-mails to [support@smoktech.com](mailto:support@smoktech.com).

## Safety Instructions

- (1) Charge the battery indoors only;
- (2) Do not use any power source that does not have a local legal manufacturing license.

English / 02

## Components



## Operation Guide

### nord 4 Device

#### 1. Power On:

While the device is off, quickly press the Power Button 5 times in 2 seconds to turn it on. The screen displays "SMOK" and enters the main interface.



#### 2. Vaping:

- (1) While the device is on, press the Power Button to vape;
- (2) When vaping, the vaping time interface is displayed, and the white LED is always on. After finishing vaping for 0.5 seconds, it will automatically return to the main

English / 03

interface.  
3) Press the Power Button 3 times to lock or unlock the vaping function.

#### 3. Wattage Setting:

Press UP/DOWN button to adjust the power level between 5W-80W.

#### 4. Puff Setting:

The number of puffs will be automatically cleared when it reaches 999P.

#### 5. Charging:

When the USB cable is inserted, the charging interface will be displayed with battery percentage and estimated charging time.



#### 6. Power Off:

While the device is on, quickly press the Power Button 5 times in 2 seconds to turn it off. The screen displays "GOODBYE".

English / 04

## The specific explanations are shown as below:

Prompt & LED Light	Notes
BATTERY LOW (White LED flashes 15 times)	The battery voltage is lower than 3.3V±0.1V before vaping. The battery voltage is lower than 2.8V±0.1V when vaping.
GOODBYE (White LED flashes 3 times)	The battery voltage is lower than 3.0V±0.1V. (Please charge the device to activate the system after low battery shutdown)
OHMS TOO LOW (White LED flashes 4 times)	Watt mode: the atomizer resistance is lower than 0.15Ω±5%
OHMS TOO HIGH (White LED flashes 4 times)	Watt mode: the atomizer resistance is higher than 2.50Ω±5%
NO ATOMIZER (White LED flashes 4 times)	Atomizer hasn't been detected.
ATOMIZER SHORT (White LED flashes 5 times)	Short circuit has been detected.
TIME OVER (White LED flashes 5 times)	The vaping time is longer than 8 seconds.
PCBA TOO HOT	The temperature of PCBA is too high, and high-temperature protection starts.
POWER LOCK	The vaping function is locked (you can't fire it when locked).
POWER UNLOCK	The vaping function is unlocked.

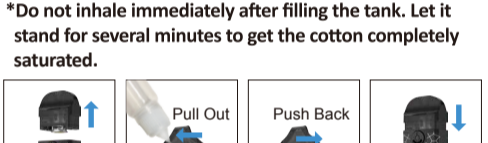
English / 05

## nord 4 Pod

### How to fill with E-liquid

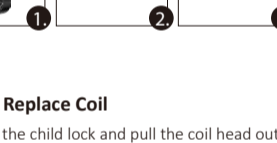
1. Pull the pod out from device.
2. Pull out the rubber plug to open the filling port; then insert the nozzle of an e-liquid refill container into the filling port.
3. Push back and press firmly the rubber plug to close the filling port of the pod.
4. Install the pod back to the device.

**\*Do not inhale immediately after filling the tank. Let it stand for several minutes to get the cotton completely saturated.**



### How to Replace Coil

1. Toggle the child lock and pull the coil head out of the pod;
2. Toggle the child lock and push the new coil head into the pod.



English / 06

# IMPORTANT SAFEGUARDS

## Attention

Please read this manual carefully before using the product. Inappropriate use or handling of this product may be harmful.

- This product is only intended to be used as an e-cigarette, for the consumption of certain e-liquids. Do not use this product for any other purpose. This product is not designed to be a smoking cessation device.
- Please use the tank provided in this kit. Do not use tanks of other brands with this kit.
- The suggested ratio of e-juice is 30% PG: 70% VG.
- Before using this product, please read carefully any information and instructions for safe use relating to the e-liquid which is vaped using this product.
- The SMOK product must not be offered for sale outside of, independently or separately to, the box or this leaflet.

## Caution

- Handle this product with care at all times:
  - Avoid damage to the product's internal and external components.
  - Keep this product dry at all times. Do not immerse this product in water as the product is not waterproof. Do not immerse this product in corrosive or conductive solution as serious damage like short circuit may occur.
  - If you drop this product, make sure:
    - (1) the product is not broken, cracked or smashed;
    - (2) there is no leaking or leakage of e-liquid;
    - (3) components are not loose and have not come apart;
    - (4) the product functions normally and as intended;
    - (5) there is no damage to the mouthpiece.

English / 07

- Do not attempt to disassemble or assemble the product by yourself as damage or personal injury may occur.
- Mechanical shock, extrusion, beating, or shaking to the device are strictly forbidden to prevent damage to circuit and battery cell.
- Do not overcharge the batteries. If the batteries overheat do not use this product.
- Charge the device indoors only;
- Do not place the product in a hot or humid environment.
- Do not expose your product to hot, cold, damp or direct sunlight.
- KEEP THIS PRODUCT OUT OF REACH OF CHILDREN.
- DO NOT use this product if:
  - broken, leaking, if parts are cracked or deformed, or if the product has malfunctioned.
  - abnormal heat occurs during vaping or charging. Do not overcharge the batteries.
  - there is concerning leakage of e-liquid from the pod.
  - conductive or corrosive liquids enter the device.
  - there is any perceptible change in flavor of the e-liquid.
  - where microbial contamination or other contamination is suspected.
- the pod is empty or almost empty. E-liquid should always be in the pod to avoid dry heating and burning the coil.
- THIS PRODUCT SHOULD BE SERVICED EVERY 6 MONTHS. If the product fails a service, do not use. Defective items and parts must be replaced before re-use.
- General use:
  - Do not eat, drink, or smoke while using this product.
  - The temperature for charging should be between 10 °C to 45 °C, temperature for using should be between 10 °C to 55 °C.
  - Vaping products, including this product, should not be used in prohibited or restricted areas.
  - Vaping products, including this product, should not be used in high oxygen environments.
  - We recommend that you do not use vaping products, including this product, while driving.
  - Using electronic cigarettes may create undesirable effects to you and the people around you.

English / 08

- Store:
  - Out of reach of children.
  - Locked up.
  - Separate and away from food and drink.
  - vSeparate and away from medical products and medication.
- In a ventilated and dry indoor environment at room temperature to avoid short circuit caused by touching with other metal materials.
- Well away from pets and animals.
- In the upright position, and secured to prevent falling over and leakage.
- Store in a dark and well-ventilated place below 30 °C.
- Do not store for long periods containing an e-liquid. If the product is not going to be used for a 2-3 days period, remove the pod and pour out the inside e-liquid to avoid e-liquid penetrating into the product and shortening the product's life-expectancy.
- In case of not using the device for extended periods, please seal off the battery and mouthpiece and store them separately.
- Do not charge this product near fire, hot stove or combustible or explosive materials or gas.
- Please use the original USB cable and UL-Listed charging sources.
- Please unplug the USB cable within 2 hours after battery is fully charged to extend the life of the battery.

## Warnings

- Regarding children
  - KEEP THIS PRODUCT OUT OF REACH OF CHILDREN. This product is intended to contain nicotine containing e-liquid. NICOTINE CONTAINING E-LIQUID IS DANGEROUS. CHILDREN MUST NOT GAIN ACCESS TO E-LIQUIDS.
  - This product contains small parts which may pose a choking hazard to children.

English / 09

- Health Warning
  - The health warning below applies when the product is used as designed and charged / filled with nicotine-containing liquid.
  - This product is suitable only for persons of 21 years or older.
  - This product is not recommended for women that are pregnant or breastfeeding.
  - Recommendation regarding young people and non-smokers
    - This product is not recommended for use by young people and non-smokers.
  - Contra-indications for vulnerable groups
    - This product is not suitable for:
      - Persons of below 21 years of age.
      - Persons who are ill or have certain medical conditions.
      - Persons taking certain medication.
      - Persons with certain allergies.
    - This product is not recommended for use by:
      - Young people and non-smokers.
      - Women that are pregnant or breastfeeding.



## Instructions on servicing and disposal

- This product should be serviced every 6 months by a reputable e-cigarette dealer. Please retain a copy of your guarantee and provide dealers with the guarantee for servicing.
- If this product fails a service, is broken, or otherwise malfunctions: do not use this product, and dispose of this product appropriately.
- For disposal – Do not discard or dispose this product in general waste cabin, please follow the local law and regulations on battery recycling and disposal.

# SAVE THESE INSTRUCTIONS!

English / 10

## Best Practices for Safe Disposal

- Check with your state and local environmental agencies for rules and guidance about e-cigarette and e-liquid waste disposal.
- Turn off the device and remove the rechargeable battery before disposal. If the device isn't yours, have the user do this.
- Store all items—especially rechargeable batteries—in a cool, temperature-controlled environment and in a container that is sealed and clearly labeled for hazardous waste.
- Never throw rechargeable batteries into the trash. Keep them in a separate container for hazardous waste.
- Deliver the sealed container of e-cigarette waste to a local hazardous waste facility at least every 90 days.
- Do not rinse e-cigarette items, such as spent cartridges, to remove the liquid nicotine residue. That water will become hazardous waste, and you will need to store and dispose of the water properly.
- Handle used and discarded cartridges carefully to avoid unintentional exposure to unused nicotine. Do not throw them away in the regular trash.
- Always be careful handling products. Liquid nicotine can be absorbed through the skin and cause accidental poisoning.

English / 11